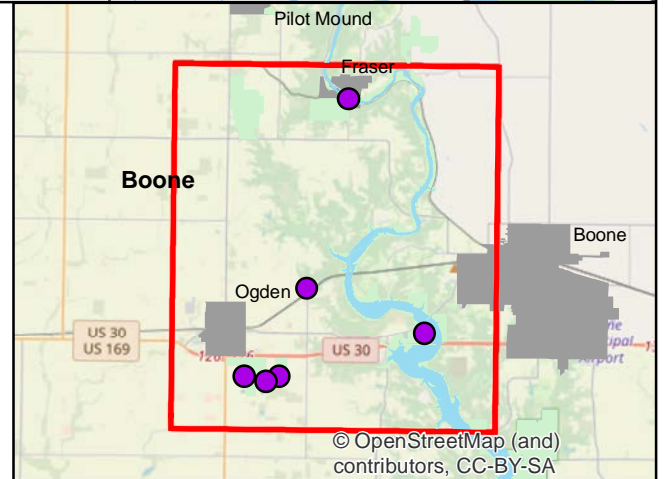
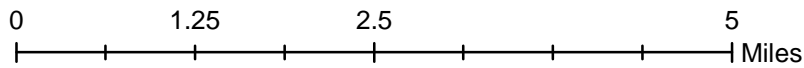
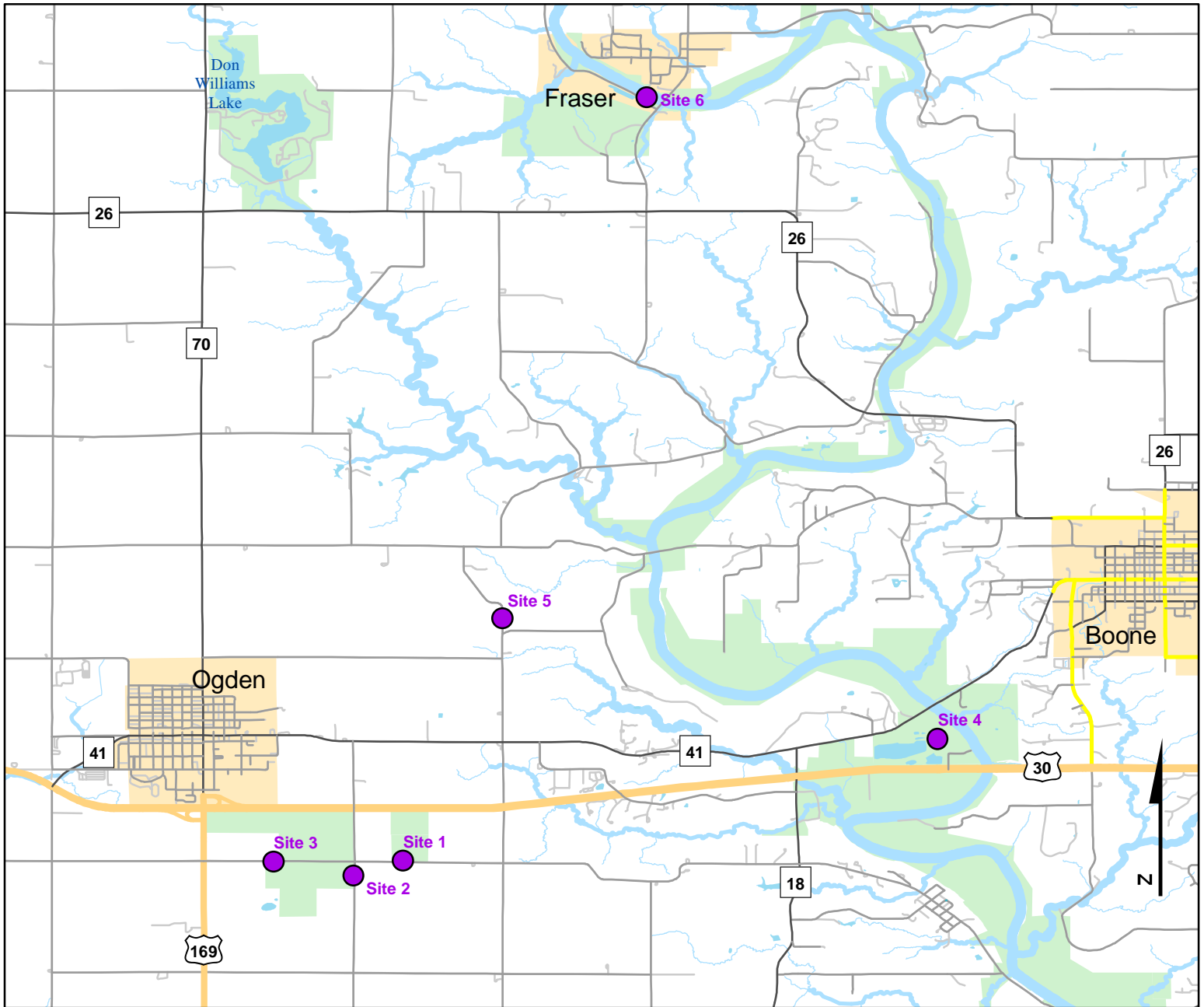




Volunteer Wildlife Monitoring Program (VWMP) Frog and Toad Survey

Route ID: 217 County: Boone

Click for Google Maps to Site 1: <https://www.google.com/maps/dir/?api=1&destination=42.022725056,-94.0020341632>

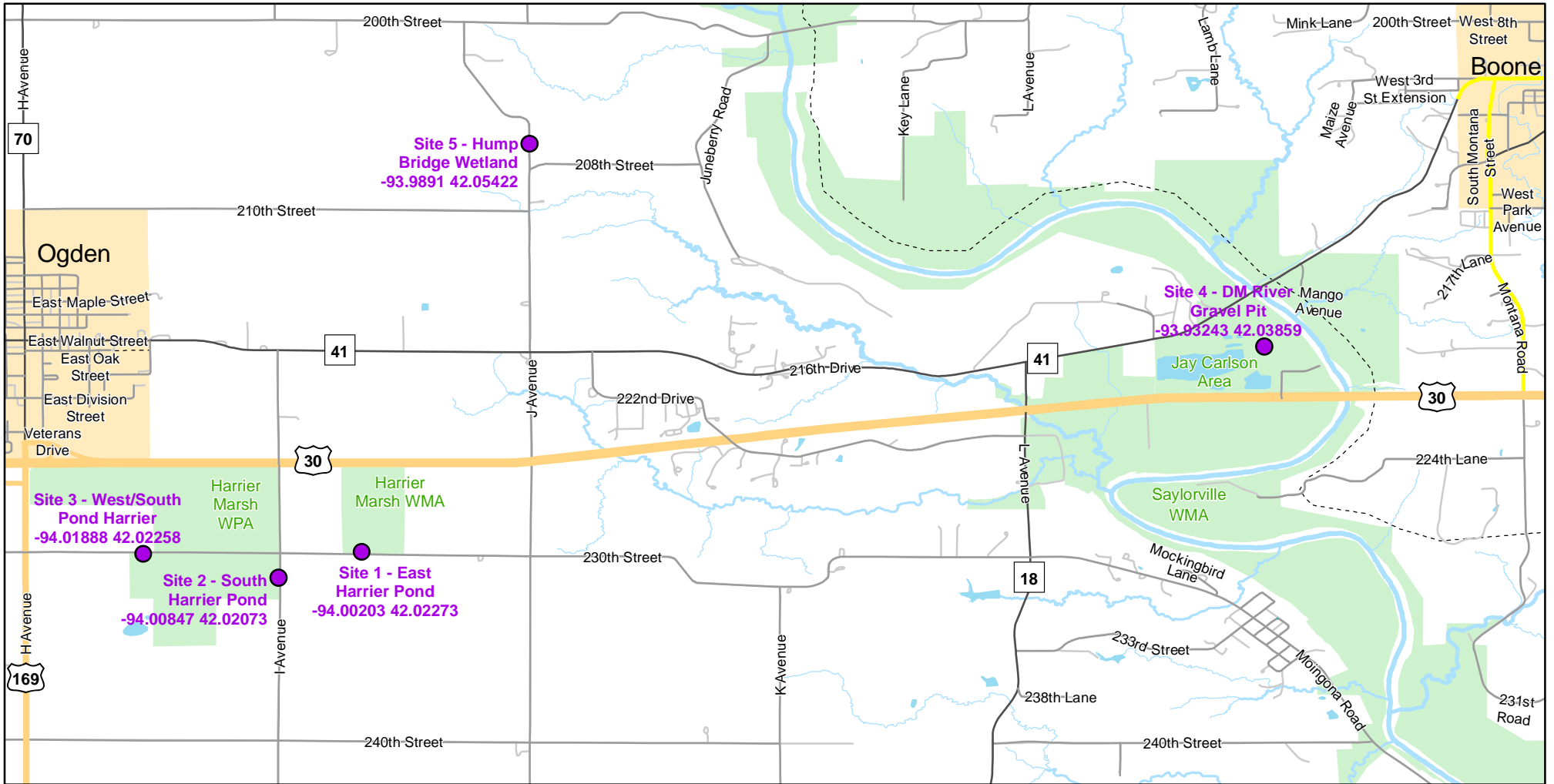




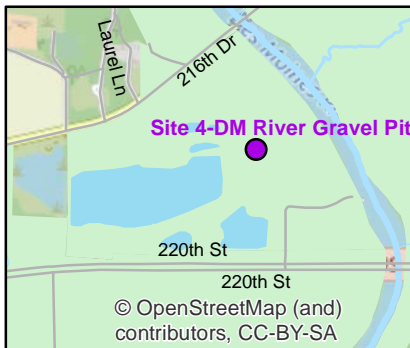
Volunteer Wildlife Monitoring Program (VWMP) Frog

Route ID: 217 County: Boone

Click for Google Maps to Site 1: <https://www.google.com/maps/dir/?api=1&destination=42.022725056,-94.0020341632>

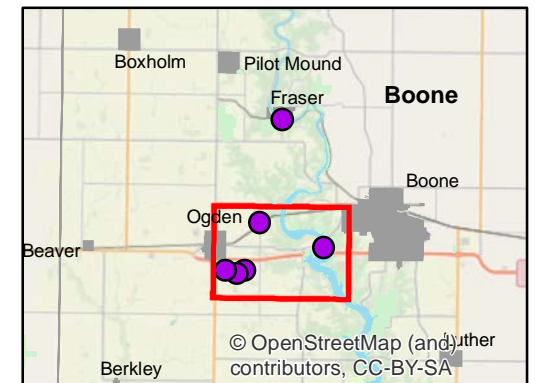
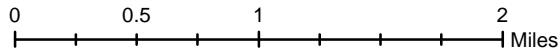


Enlarged View of Site 4



Legend

----- Trails

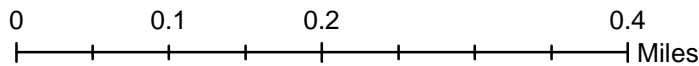
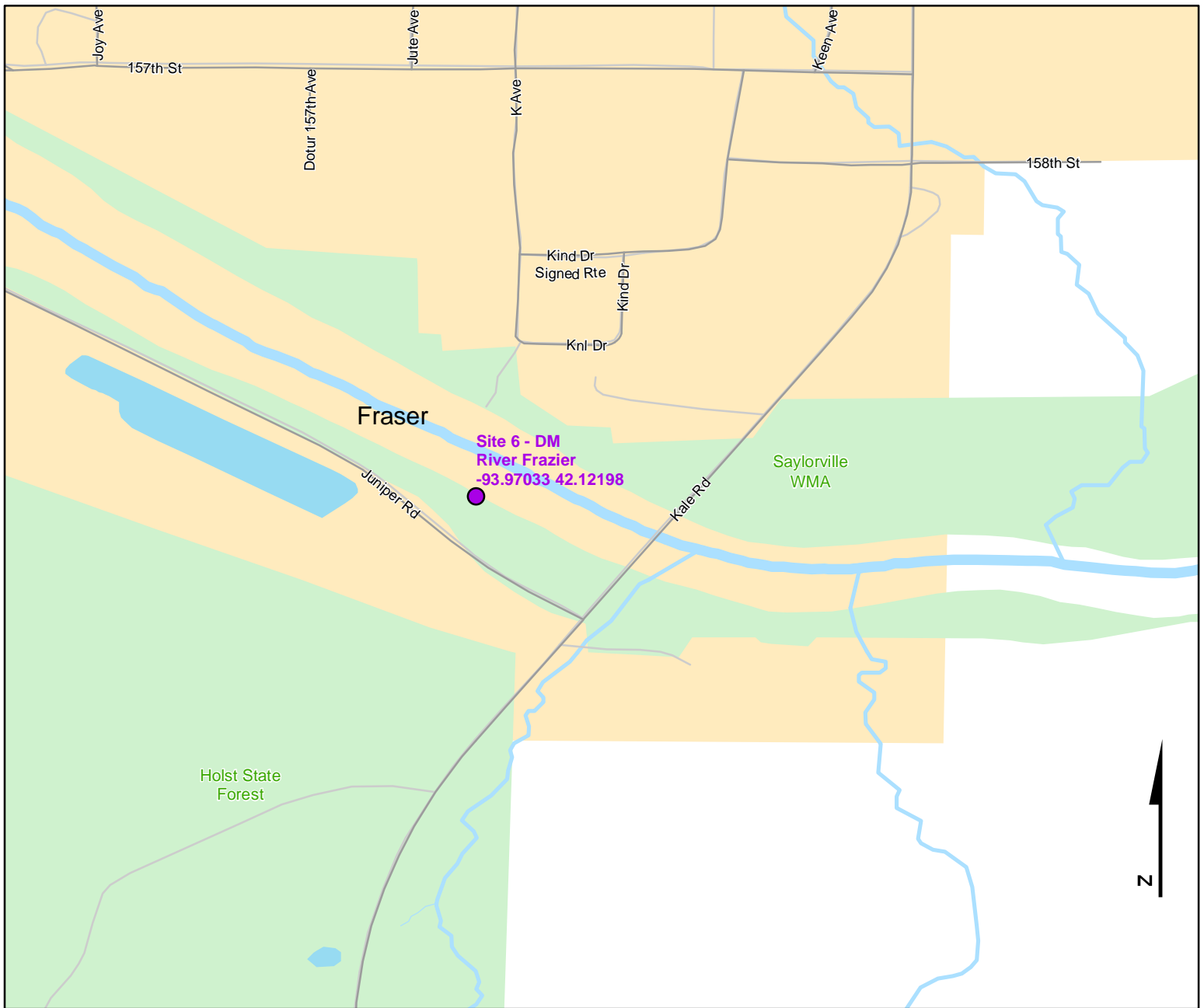




Volunteer Wildlife Monitoring Program (VWMP) Frog and Toad Survey

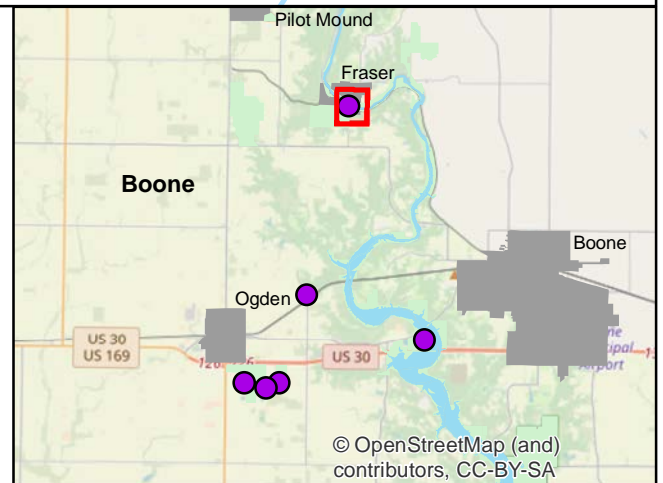
Route ID: 217 County: Boone

Click for Google Maps to Site 1: <https://www.google.com/maps/dir/?api=1&destination=42.022725056,-94.0020341632>



Legend

----- Trails





Frog and Toad Call Survey Route Description

Route ID **217**

Established: 2003

Site Number	Name	County	Latitude	Longitude	Directions
1	East Harrier Pond	Boone	42.0227251	-94.0020342	Just east on 230th St after intersection with I Ave, on north side of road
2	South Harrier Pond	Boone	42.0207323	-94.0084648	On I Ave, just south of intersection with 230th St. On west side of road at the first pond
3	West/South Pond Harrier	Boone	42.0225767	-94.0188818	West on 230th St from intersection with I Ave, pond is on south side of road
4	DM River Gravel Pit	Boone	42.0385867	-93.9324261	Gravel pit filled with water, access road is north off of Highway 30.
5	Hump Bridge Wetland	Boone	42.0542158	-93.9891028	Wet meadow just north of the J Ave and 208th St intersection. On both sides of road before curve on J Ave
6	DM River Frazier	Boone	42.121978	-93.9703281	